
Report of the Head of Scrutiny and Member Development

Report to Scrutiny Board (Safer and Stronger Communities)

Date: 12th November 2012

Subject: Recommendation Tracking – Fuel Poverty Inquiry

Are specific electoral Wards affected? If relevant, name(s) of Ward(s):	<input type="checkbox"/> Yes	<input checked="" type="checkbox"/> No
Are there implications for equality and diversity and cohesion and integration?	<input type="checkbox"/> Yes	<input checked="" type="checkbox"/> No
Is the decision eligible for Call-In?	<input type="checkbox"/> Yes	<input checked="" type="checkbox"/> No
Does the report contain confidential or exempt information? If relevant, Access to Information Procedure Rule number: Appendix number:	<input type="checkbox"/> Yes	<input checked="" type="checkbox"/> No

Summary of main issues

1. This report sets out the progress made in responding to the recommendations arising from the previous Scrutiny inquiry into Fuel Poverty.
2. The Scrutiny recommendation tracking system allows the Scrutiny Board to monitor progress and identify completed recommendations; those progressing to plan; and those where there is either an obstacle or progress is not adequate. The Board will then be able to take further action as appropriate.

Recommendations

3. Members are asked to:
 - Agree those recommendations which no longer require monitoring;
 - Identify any recommendations where progress is unsatisfactory and determine the action the Board wishes to take as a result.

1 Purpose of this report

- 1.1 This report sets out the progress made in responding to the recommendations arising from the previous Scrutiny inquiry into fuel poverty.

2 Background information

- 2.1 Recognising that fuel poverty impacts on individuals, the community and public services in many different ways, the Safer and Stronger Communities Scrutiny Board conducted an in-depth inquiry last year. In April 2012, the Board produced a report setting out its findings and recommendations following its inquiry.
- 2.2 The Scrutiny recommendation tracking system allows the Board to monitor progress and identify completed recommendations; those progressing to plan; and those where there is either an obstacle or progress is not adequate. The Board will then be able to take further action as appropriate.

3 Main issues

- 3.1 A standard set of criteria has been produced to enable the Board to assess progress. These are presented in the form of a flow chart at Appendix 1. The questions in the flow chart should help to decide whether a recommendation has been completed, and if not whether further action is required.
- 3.2 To assist Members with this task the Principal Scrutiny Adviser, in liaison with the Chair, has given a draft status for each recommendation. The Board is asked to confirm whether these assessments are appropriate and to change them where they are not. Details of progress against each recommendation is set out within the table at Appendix 2.

4 Corporate Considerations

4.1 Consultation and Engagement

- 4.1.1 Where internal or external consultation processes have been undertaken with regard to responding to the Scrutiny Board's recommendations, details of any such consultation will be referenced against the relevant recommendation within the table at Appendix 2.

4.2 Equality and Diversity / Cohesion and Integration

- 4.2.1 Where consideration has been given to the impact on equality areas, as defined in the Council's Equality and Diversity Scheme, this will be referenced against the relevant recommendation within the table at Appendix 2.

4.3 Council Policies and City Priorities

- 4.3.1 The scrutiny recommendations are complementary to the priorities of the Affordable Warmth Strategy (2007-2016), City Priority Partnership Plan for Health and Wellbeing and Public Health Outcomes Framework.

4.4 Resources and Value for Money

- 4.4.1 Details of any significant resource and financial implications linked to the Scrutiny recommendations will be referenced against the relevant recommendation within the table at Appendix 2.

4.5 Legal Implications, Access to Information and Call In

- 4.5.1 This report does not contain any exempt or confidential information.

4.6 Risk Management

- 4.6.1 This section is not relevant to this report.

5 Conclusions

- 5.1 The Scrutiny recommendation tracking system allows the Board to monitor progress and identify completed recommendations. Progress in responding to those recommendations arising from the Scrutiny inquiry into fuel poverty is detailed within the table at Appendix 2 for Members' consideration.

6 Recommendations

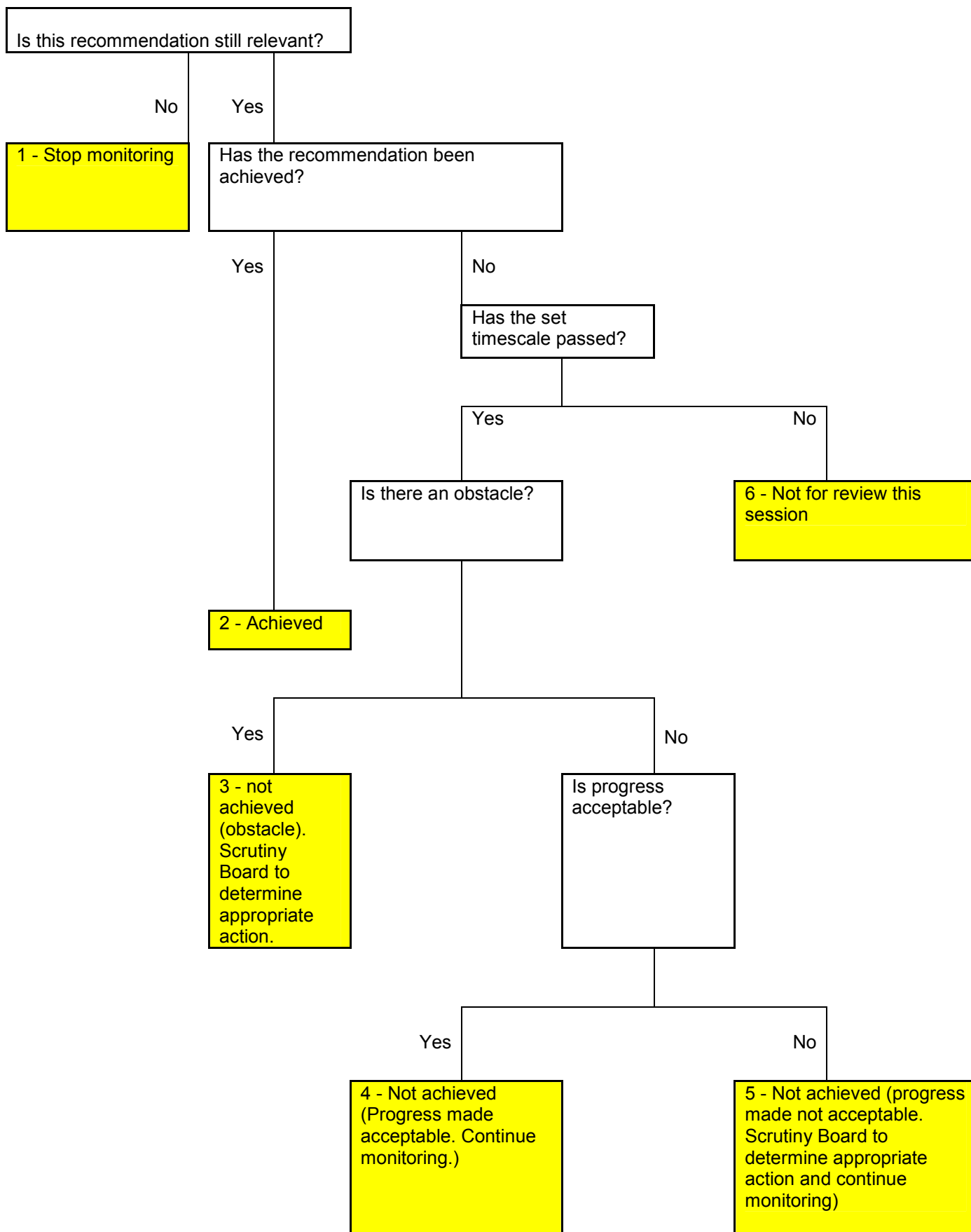
- 6.1 Members are asked to:
- Agree those recommendations which no longer require monitoring;
 - Identify any recommendations where progress is unsatisfactory and determine the action the Board wishes to take as a result.

7 Background documents¹

- 7.1 Scrutiny Board (Safer and Stronger Communities) Scrutiny Inquiry Report on Fuel Poverty. April 2012.

¹ The background documents listed in this section are available to download from the Council's website, unless they contain confidential or exempt information. The list of background documents does not include published works.

Recommendation tracking flowchart and classifications:
Questions to be Considered by Scrutiny Boards



Fuel Poverty Inquiry (April 2012)

Categories

- 1 - Stop monitoring
- 2 - Achieved
- 3 - Not achieved (Obstacle)
- 4 - Not achieved (Progress made acceptable. Continue monitoring)
- 5 - Not achieved (Progress made not acceptable. Continue monitoring)
- 6 - Not for review this session

Recommendation for monitoring	Evidence of progress and contextual information	Status (categories 1 – 6) (to be completed by Scrutiny)	Complete
<p>Recommendation 1 That, in working through potential operational models and the practicalities of moving towards the new Public Health system in April 2013, the Executive Board and Health and Wellbeing Board use fuel poverty as a key public health topic area in which to demonstrate how these new arrangements are to work in practice in the future.</p>	<p>Formal Response (provided by the Director of Public Health in July 2012):</p> <p>The Director of Public Health provided a report to the Executive Board and Health and Wellbeing Board in June 2012 advising on this particular recommendation. This recommendation was agreed by both the Executive Board and the Health and Wellbeing Board and is welcomed in the development of the new Public Health system in Leeds. Fuel Poverty will be identified as a priority and systems will be developed to embed relevant work programmes across Leeds City Council. Fuel poverty will also be included as a priority in the forthcoming Health and Wellbeing Strategy.</p>		

	<p>Current position: The new Public Health operating model has been agreed by the Executive board. This will involved a hub and spoke model with links to Council directorate. This will enhance even closer working between Public Health and Environments & Neighbourhoods on the fuel poverty agenda.</p>	2 - Achieved	
<p>Recommendation 2. That as part of the development of the Joint Health and Wellbeing Strategy for Leeds, the Health and Wellbeing Board ensures that fuel poverty is identified as a key priority within this Strategy.</p>	<p>Formal Response (provided by the Director of Public Health in July 2012):</p> <p>Fuel Poverty has been identified as a key priority within the Draft Joint Health and Wellbeing Strategy for Leeds which is currently being developed by a task group reporting to the Health and Wellbeing Board.</p> <p>Current position: The draft Joint Health and Wellbeing Strategy has been to the Health Improvement Board and the most recent Health and Well Being Board and includes a priority on health improvement through action on addressing housing and fuel poverty.</p>	2 - Achieved	
<p>Recommendation 3. That, ahead of becoming the responsible lead for exercising the new public health functions on behalf of the Council, the Director of Public Health in Leeds drives forward action now in tackling fuel poverty as a key public health priority for the city.</p>	<p>Formal Response (provided by the Director of Public Health in July 2012):</p> <p>The Director of Public Health has ensured that fuel poverty and affordable warmth are key priorities within the Draft Joint Health and Wellbeing Strategy for Leeds, as well as the City Priority Partnership plan. These priorities include identifying vulnerable groups at risk of suffering from cold and damp housing, and referring/ signposting them into opportunities for increasing affordable warmth. Health Improvement Specialists have been assigned to lead the public health actions in partnership with lead officers from Leeds City Council.</p>		

	<p>Current position: Fuel poverty has been identified as a key priority within the draft Joint Health and Wellbeing strategy. Fuel poverty has also been included as a priority with the Leeds Winter planning process with identified Public Health/ NHS Leeds resource allocated for 12/13 activity.</p> <p>The Directors of Public Health across Yorkshire and Humber have recently signed off an electronic toolkit to support frontline workers in providing consistent messages to vulnerable people over winter, about staying warm and well. This is being rolled out across Leeds as part of the Winter planning process lead by The Energy Policy Team and Public Health.</p> <p>A comprehensive work programme continues to be developed as part of the Affordable Warmth Partnership, working in partnership with officers from the Energy Policy Team (EPT) in LCC, Public Health and a wide range of organisations.</p>	2 - Achieved	
<p>Recommendation 4. That the Leader of the Council assists the Director of Public Health in Leeds to champion affordable warmth and move action to tackle fuel poverty up the agenda of a wide range of other stakeholders and partners in the public, private and community sectors.</p>	<p>Formal Response (provided by the Director of Public Health in July 2012):</p> <p>Following the May 2012 local elections, Leeds City Council has created an additional member portfolio dedicated to the increasingly important agenda of health. The new Executive Member for Health and Wellbeing, Councillor Mulherin, will also take on the Chair of the Health and Wellbeing Board. The Scrutiny Inquiry report highlighted the importance of the Health and Wellbeing Board and the forthcoming Health and Wellbeing Strategy to take forward fuel poverty as a key public health priority. For these reasons it has been agreed by the new Executive Member for Health and Wellbeing to work with the Director of Public Health to progress this important recommendation.</p>		

	<p>Current position: The Joint Health and Wellbeing strategy includes maximising health improvement through addressing action on housing as a priority; this will be measured through the number of households in fuel poverty.</p> <p>Fuel poverty is a priority for the Affordable Warmth Partnership group where action to tackle fuel poverty is being taken forward by a wide range of stakeholders.</p> <p>Additional activity is also taking place within Area Leadership Teams where fuel poverty champions have been identified. Identified Champions will receive additional information on fuel poverty through the Member Development programme.</p>	2 - Achieved	
<p>Recommendation 5. That the Director of Public Health in Leeds works closely with the Director of Environment and Neighbourhoods to develop a clear strategy around fuel poverty data collection before April 2013.</p>	<p>Formal Response (provided by the Director of Public Health and Director of Environment and Neighbourhoods in July 2012):</p> <p>The Scrutiny report recognises the need to ensure that local trends in fuel poverty are monitored effectively to demonstrate progress in tackling fuel poverty, set out in the Public Health Outcomes Framework. This is a complicated request, as fuel poverty is a function of home energy efficiency levels, energy prices, income and a host of other minor factors. Additionally, the impact of fuel poverty on an individual depends to a large extent on their vulnerability, with elderly people, the very young and people with disabilities being much more at risk of ill health. Whilst there are good fuel poverty statistics available from Government, these are very high level. Scrutiny members were more interested in gathering and manipulating local data in order to target interventions to support most vulnerable people.</p> <p>Currently, local fuel poverty assessments are based on the last Home Energy Conservation Association (HECA) survey conducted in 2009 which Local Authorities are no longer required to undertake,</p>	4 - Not achieved (Progress made acceptable. Continue monitoring.)	

	<p>whilst they await details of the successor legislation to the Home Conservation Act 1995. Therefore, the Council has suspended the annual HECA survey and instead is monitoring change using a combination of energy efficiency measures installed, fuel use data and Energy Performance Certificates. The Director of Public Health agrees to work closely with the Director of Environment and Neighbourhoods to develop a clear strategy around fuel poverty data collection, to include housing/energy data, income data and health factors, before the end of April 2013.</p> <p>Current position:</p> <p>The Energy Policy Team (EPT) have begun purchasing Energy Performance Certificate data to build an up to date picture of energy efficiency across the Leeds Housing Stock and to better define our understanding of Fuel Poverty. EPT and NHS Leeds have also met to begin the process of combining Public Health and energy efficiency data at Middle Super Output Area level in order to better target energy measures and develop a better understanding of the effectiveness of energy efficiency/heating measures in alleviating ill health.</p>		
<p>Recommendation 6 That the Leeds Initiative Board integrates the Leeds Affordable Warmth Partnership into the formal Health and Wellbeing Board, reporting directly into the Health Improvement Board, to assist in attracting and retaining future commitment of key partners and enable a more transparent process of monitoring the delivery of the Leeds Affordable Warmth Strategy and accompanying action plan.</p>	<p>Formal Response (provided by the Head of Partnerships in July 2012):</p> <p>The recommendation will be formally drawn to the attention of the Leeds Initiative Board at the meeting scheduled for 7th September. Practical arrangements for reporting progress of the Leeds Affordable Warmth strategy and action plan to the Health Improvement Board will be put into place. The contribution of this strategy to the delivery of all city priorities will be considered by all relevant partnerships.</p>		

	<p>Current position: The governance arrangements recommended by the scrutiny board have been put into place. It was not possible to consider this issue at 7th September Leeds Initiative Board but a paper will be presented at the 7th December meeting.</p>	<p>4 - Not achieved (Progress made acceptable. Continue monitoring.)</p>	
<p>Recommendation 7 That the Chair of the Member Development Working Group ensures that fuel poverty is included in the development of the public health role of Elected Members through the Member Development Programme and Induction programme in preparation for the new system being operational from April 2013.</p>	<p>Formal Response (provided by the Chair of the Member Development Working Group in July 2012):</p> <p>The Member Development Working Group met on 20th June and welcomed the recommendation. At the meeting we discussed the draft events programme for Autumn 2012 and agreed that training for Members on fuel poverty should form part of the 'Healthy Leeds' series. ('Healthy Leeds is an on-going programme supported by the Executive Member for Health and Well-being, which aims to develop the public health role of Members as well as informing them about changes to the health landscape).</p> <p>The Working Group will progress this event with the Executive Member for Health and Well-being and the relevant officers, with the aim of running an initial event on Fuel Poverty by end of October 2012.</p> <p>Current position:</p> <p>The Fuel Poverty seminar will take place on Wednesday 19th December. This practical and interactive session, presented by Rob Curtis (Fuel Poverty Officer) and chaired by Cllr Lisa Mulherin will cover:</p> <ul style="list-style-type: none"> - what is meant by fuel poverty and the current situation in Leeds - causes and health implications - how to recognise those at risk and get support for your constituents 	<p>4 - Not achieved (Progress made acceptable. Continue monitoring.)</p>	

	<p>- update on the Green Deal and energy efficiency initiatives.</p> <p>(There is also likely to be a brief update on Health Protection eg flu immunisation programme as part of this event).</p>		
<p>Recommendation 8 (i) That Area Committees nominate a Fuel Poverty Champion to drive forward local action in addressing fuel poverty problems associated with their particular areas.</p>	<p>Formal Response (provided by the Assistant Chief Executive (Customer Access and Performance) in July 2012):</p> <p>During discussions at the Area Chairs Forum meeting on 13th July it was agreed that the issue of fuel poverty is a major concern for Area Committees and that local action needs to be determined to tackle particular problems at a local level. A review of Area working commenced in June which will look at the role of Area Committees and will include a review of how Area Committees can be enabled to provide a local influence over a range of issues and services. This review will cover the role of Area Committee sub-boards and champions in order to make effective use of members time and influence, and to ensure that robust links are created with officers in council services and partner organisations to enable the roles of champions to be productive and influential. It was therefore agreed that the Area Committee's role in influencing the fuel poverty agenda be included in the review of Area Working, and that appropriate responsibility for an Area Committee champion or sub board would be included in the recommendations of the review.</p> <p>Current position:</p> <p>After an extensive consultation exercise with elected members, council officers, partners and other stakeholders, the Review of Area Working has reached the stage of a report being taken to CLT in October prior to formal recommendations being taken to Executive Board in December 2012. The recommendations will cover the appointment of Area Committee Champions.</p>	<p>5 - Not achieved (progress made not acceptable. Scrutiny Board to determine appropriate action and continue monitoring)</p>	

<p>Recommendation 8 (ii) That the Area Committee Fuel Poverty Champions liaise with their respective Locality Health and Wellbeing Managers to agree the appointment of one Fuel Poverty Champion from each of the 3 localities onto the Leeds Affordable Warmth Partnership.</p>	<p>Formal Response (provided by the Assistant Chief Executive (Customer Access and Performance) in July 2012):</p> <p>One aspect covered in the Area Working review will be the links between Area Committees, Area Support Teams and Area Leadership Teams with the various Partnerships in Leeds. Consultations will take place with a wide range of stakeholders, including Locality Health and Wellbeing Managers and Partnership Boards. It has been agreed that effective links and representation for Area Committees on the Leeds Affordable Warmth Partnership will be included in the review.</p> <p>Current position:</p> <p>The Review of Area Working report being taken to Executive Board in December 2012 covers the role of Area Committee Champions and will include recommendations relating to the role of champions and their links with Executive Board and other partnership boards.</p>	<p>5 - Not achieved (progress made not acceptable. Scrutiny Board to determine appropriate action and continue monitoring)</p>	
<p>Recommendation 9. That the Health and Wellbeing Board works with the local Clinical Commissioning Groups to ensure that:</p> <p>(i) A consistent and systematic approach to identifying the needs of vulnerable householders at risk of fuel poverty is being adopted as part of the developing risk stratification process.</p>	<p>Formal Response (provided by the Director of Public Health in July 2012):</p> <p>The Integrated Health and Social Care Board agreed that the Health and Social Care Integrated neighbourhood teams would use a consistent and systematic approach to identify the needs of vulnerable patients and deliver high impact interventions to reduce excess winter deaths. This process will be embedded within the roll out of the integration of health and social care across the city. The approach consists of three elements – risk stratification (to identify those who in the future are most likely to have higher needs), integrated health and social care teams (including primary care), and systematic self management – ensuring the patient is at the centre of decisions about their care. This has already begun in 3 areas of the city (Meanwood. Kippax/ Garforth and Pudsey) and will cover the whole city by March 2013.</p>		

	<p>Current position:</p> <p>Systematic referral systems have been embedded and strengthened within Leeds Community Health Care and 35 Energy champions have been identified and trained. The Energy Champions identified have a particular focus in the Health and Social Care Integrated neighbourhood teams.</p> <p>Next stage is to establish how to further strengthen this approach within the integrated teams as this programme is rolled out across the city.</p>	<p>4 - Not achieved (Progress made acceptable. Continue monitoring.)</p>	
<p>Recommendation 9 That the Health and Wellbeing Board works with the local Clinical Commissioning Groups to ensure:</p> <p>(ii) that as part of this process, a consistent approach is being adopted by the developing integrated health and social care teams in ensuring that, once identified, those at risk of fuel poverty are effectively being referred to appropriate support schemes.</p>	<p>Formal Response (provided by the Director of Public Health in July 2012):</p> <p>The Integrated Health and Social Care Board agreed that once individuals have been identified through the risk stratification process, the Health and Social Care Integrated neighbourhood teams would deliver high impact interventions recommended by the Department of Health to reduce excess winter deaths. These interventions include a fuel poverty assessment, benefits review, flu vaccination, lifestyle advice and support, telecare and telehealth referral as appropriate and falls prevention assessments.</p> <p>Current position:</p> <p>The ten high impact interventions to reduce excess winter deaths are being incorporated within the organisational development framework within the health and social care integrated teams. The focus of this programme is to ensure that the workforce of the future have the correct level of skills, knowledge and competencies to deliver a comprehensive integrated service in the future.</p>	<p>4 - Not achieved (Progress made acceptable. Continue monitoring.)</p>	

<p>Recommendation 10 (i) That the Executive Board and Health and Wellbeing Board fully supports and regularly monitors the development of a simple, systematic referral pathway and effective uptake for fuel poverty support from key health and council services (this maybe by using the Multi Agency Referral Scheme (MARS) if appropriate.</p>	<p>Formal Response (provided by the Director of Public Health in July 2012):</p> <p>The Director of Public Health provided a report to the Executive Board and Health and Wellbeing Board in June 2012 advising on this particular recommendation. This recommendation was agreed by both the Executive Board and the Health and Wellbeing Board. It was proposed that in developing a simple systematic referral pathway across Health and Council services, a twin track approach will need to be adopted. This will involve:</p> <ul style="list-style-type: none"> • a universal multi-agency referral system to be used across the city by frontline staff linked to other key initiatives, or used in targeted neighbourhoods to support customers to access a wide range of preventative services including affordable warmth, and • a specialised referral pathway specifically for the referral of clients with an existing health condition used by the health and social care integrated teams. <p>This proposed approach was agreed by the Executive Board.</p> <p>Current position:</p> <p>A twin track approach is being developed for the City.</p> <p>The first of this twin track approach consists of the Hotspots scheme which is being promoted to all frontline workers across Leeds. This scheme is a universal referral system into the Hotspots scheme which provides a wide range of advice and support around energy efficiency measures. Where MARS (Multi agency referral scheme) is in operation, currently in Hyde Park, frontline workers are referring people into energy saving advice via the Hotspots Scheme</p>	<p>4 - Not achieved (Progress made acceptable. Continue monitoring.)</p>	
--	---	---	--

	<p>The second of the twin track approaches is the Warm Homes Service/Energy Champion scheme. This scheme is a specialised referral system specifically developed for people with long term health conditions. People whose health conditions are exacerbated by living in cold damp conditions are identified and referred into the Warm Homes Service scheme by trained Energy Champions.</p>		
<p>Recommendation 10 (ii) That the Director of Public Health, Director of Adult Social Care and the Clinical Commissioning Group accountable officers provide an update report to Scrutiny on the implementation of this pathway by July 2012</p>	<p>Formal Response (provided by the Director of Public Health in July 2012):</p> <p>The Director of Public Health, Director of Adult Social Care and the Clinical Commissioning Group accountable officers agree to submit an update report to Scrutiny on progress against this recommendation, but would recommend that this update be considered in October/November 2012. This would allow time for the programme to develop and for a more detailed report on progress to be submitted.</p> <p>Current position:</p> <p>More detailed update is attached as Appendix 3.</p>	<p>4 - Not achieved (Progress made acceptable. Continue monitoring.)</p>	
<p>Recommendation 11. That the Director of Environment and Neighbourhoods works closely with Voluntary Action Leeds to explore opportunities for delivering training on the hotspots referral scheme more widely across the third sector and in raising the profile of fuel poverty generally.</p>	<p>Formal Response (provided by the Director of Environment and Neighbourhoods in July 2012):</p> <p>Over the past two years, Environment and Neighbourhoods has undertaken Hotspots/fuel poverty training for many teams and organisations that regularly come in to contact with vulnerable members of the public, including 24 voluntary sector organisations. The Director of Environment and Neighbourhoods agrees to build on this progress by working with Voluntary Action Leeds to organise Hotspots training for additional third sector organisations.</p>		

	<p>Current position:</p> <p>The Fuelsavers Team in Environment and Neighbourhoods have arranged with Voluntary Action Leeds to publicise the Hotspots scheme through their publications and newsletters etc in the run up to winter. We believe that voluntary sector organisations will be most receptive to the Affordable Warmth message at this time of year.</p>	<p>4 - Not achieved (Progress made acceptable. Continue monitoring.)</p>	
<p>Recommendation 12. That the Director of Environment and Neighbourhoods monitors the development of the 'Keeping Warm in Yorkshire and Humber' web based resource tool and assists in promoting it's use once formally launched.</p>	<p>Formal Response (provided by the Director of Environment and Neighbourhoods in July 2012):</p> <p>Environment and Neighbourhoods was involved in the original Warm Homes Healthy People funding bid for 'Keeping Warm in Yorkshire and Humber' and has assisted in the design and development of the toolkit. The Director of Environment and Neighbourhoods agrees to embed the promotion of 'Keeping Warm in Yorkshire and Humber' in the actions of the Affordable Warmth Partnership and further promote it amongst partner organisations.</p> <p>Current position:</p> <p>The Fuelsavers Team in Environment and Neighbourhoods, together with NHS Airedale Bradford and Leeds have come together with their relevant communications teams to plan to utilise the tool and promote it to relevant partners. The resource will be utilised in a forthcoming joint NHS Airedale, Bradford and Leeds/Leeds City Council public health campaign promoting winter warmth in the run up to winter.</p>	<p>4 - Not achieved (Progress made acceptable. Continue monitoring.)</p>	

<p>Recommendation 13. In promoting future based schemes aimed at achieving affordable warmth we recommend that the Director of Environment and Neighbourhoods works closely with the Head of Communications and Marketing to develop an appropriate framework to assist in encouraging greater take up of such schemes.</p>	<p>Formal Response (provided by the Director of Environment and Neighbourhoods in July 2012):</p> <p>The Fuelsavers team in Environment and Neighbourhoods have worked closely with Corporate Communications team (and Yorkshire Energy Services, the contractor) to develop and deliver a communications plan to support Wrap Up Leeds. The communications approach has led to over 5,000 installed measures to date and the effectiveness of different channels is being monitored and will be evaluated at scheme end. The Director of Environment and Neighbourhoods agrees to work closely with the Communications Team to use the lessons learnt to help develop a communications framework based on delivery of the Green Deal/ECO. This framework can then be used to co-ordinate the publicity of future domestic energy efficiency and affordable warmth schemes.</p> <p>Current position:</p> <p>The Fuelsavers Team in Environment and Neighbourhoods and Corporate Communications continue to work closely to deliver the Wrap Up Leeds communications plan which has so far led to the installation of over 7300 measures.</p> <p>The Fuelsavers Team and Corporate Communications will be working closely with NHS Airedale, Bradford and Leeds to develop a campaign to promote winter warmth over the coming winter period. This will include promoting schemes such as Warm Front, the Warm Homes Service, run by Care and Repair and the Green Doctor, run by Groundwork Leeds, to provide improved heating and insulation measures to vulnerable households.</p>	<p>4 - Not achieved (Progress made acceptable. Continue monitoring.)</p>	
--	--	---	--

<p>Recommendation 14. That once available the Director of Environment and Neighbourhoods reports to the Executive Board and Scrutiny on the final proposal for the Green Deal and ECO schemes and how the Council and its partners intend to promote and deliver these schemes locally.</p>	<p>Formal Response (provided by the Director of Environment and Neighbourhoods in July 2012): The Council has engaged closely with DECC to ensure that we are well placed when the Green Deal/ECO are launched in October 2012. As part of this, the Council is acting as the ‘anchor authority’ to develop a detailed business case for the Leeds City Region to establish a Green Deal/ECO framework and has engaged with the Affordable Warmth Partnership to look at ways of involving local partners in delivery. The Director agrees to present the final proposals to the Executive Board for approval, along with plans to publicise and roll out the Green Deal/ECO in Leeds as soon as is practicable. To ensure that momentum from delivering Wrap Up Leeds is maintained, the Director will undertake a procurement exercise for energy efficiency led regeneration in deprived areas under ECO, to launch in October/November 2012.</p> <p>Current position: The Fuelsavers Team continues to develop a business plan for the wider Green Deal/ECO framework within Leeds City Region, and continues to work with the Affordable Warmth Partnership to ensure that local partners are involved in delivery. This is to be reported to Executive Board in December, subject to Leeds City Region CEO approval.</p> <p>In the interim, the Fuelsavers Team has developed a Green Deal Demonstrator project using grant funding from DECC to offer Green Deal and ECO measures to households. This was approved by Executive Board on the 17th October and a mini-competition has been launched to secure a delivery partner.</p> <p>To test the engagement of the community sector, the Fuelsavers Team have also developed a plan with Groundwork Leeds to offer the Green Deal/ECO alongside an expanded Green Doctor Service. This will be dependent on whether our bid for the Warm Homes Healthy People Fund is successful.</p>	<p>6 - Not for review this session</p>	
--	--	--	--

<p>Recommendation 15. That the Council utilises the Energy Performance Certificate data, when made available by Government, to identify specific properties and areas to target with affordable warmth measures and to proactively work with energy suppliers and others to explore provision of grants from existing CERT and CESP and the forthcoming ECO.</p>	<p>Formal Response (provided by the Director of Environment and Neighbourhoods in July 2012):</p> <p>The Council has worked hard since the late-90s to develop and update and update a domestic energy database. We have recently combined this database with other Council databases and GIS mapping techniques to identify specific homes, streets and neighbourhoods to target with Wrap Up Leeds and Warmfront promotion. Wrap Up Leeds is also gathering additional data on properties contacted to supplement the energy database. We have also used the evidence to select areas most suitable for CESP funding and are currently working with partners to develop CERT supported initiatives for external wall insulation and narrow-cavity wall insulation.</p> <p>Government made the Energy Performance Certificate (EPC) database available to certain organisations, including local authorities, in June 2012. Since 2007, almost 120,000 EPC surveys have been undertaken in Leeds and the Council is now in the process of purchasing these records. These will help to target the Green Deal, ECO, RHI or other suitable energy efficiency initiatives in future.</p> <p>Current position:</p> <p>The Council has now purchased EPC data for 109,870 unique properties and this has already been used for a targeted Wrap Up Leeds mailing. The data is currently being analysed to target further initiatives.</p>	<p>4 - Not achieved (Progress made acceptable. Continue monitoring.)</p>	
---	--	---	--

<p>Recommendation 16. That the Director of Public Health in Leeds works closely with the Clinical Commissioning Groups to look at the potential of providing longer term funding to maintain the existing Warm Homes Service (which has been partially funded by the time limited Department of Health Warm Homes Healthy People scheme) administered by Care and Repair</p>	<p>Formal Response (provided by the Director of Public Health in July 2012):</p> <p>The Scrutiny report highlights the need for a partnership approach to align funding for preventative care in terms of tackling category 1 hazards such as excess cold. NHS Airedale, Bradford and Leeds will be working with Clinical Commissioning Groups to progress the Winter Plan 12/13 and to implement the Department of Health Cold Weather Plan. The Cold Weather Plan aims to prepare for, alert people to and prevent the major avoidable effects of winter on people's health. The Director of Public Health and Clinical Commissioning Groups will consider whether the Warm Homes Service, administered by Care and Repair, could be funded as part of this winter planning process.</p> <p>Current position: The Winter Plan for Leeds has been developed through the Urgent Care Stakeholder group incorporating priorities from the Cold Weather Plan. NHS Leeds has identified resource for 2012/13 to strengthen existing activity within the Third sector to reduce the hazardous effects of cold on vulnerable people.</p> <p>As part of Winter Plan, Leeds City Council, with support from NHS Leeds Public Health and CCGs have submitted a proposal to Department of Health 'Warm Homes Healthy People fund' for Third sector organisations to provide energy efficiency measures to vulnerable people. The outcome of this bid will be communicated by the beginning of November.</p> <p>This proposal outlines activity that will increase energy saving advice and measures to vulnerable people through The Warm Homes Service, Groundwork and Leeds Community Foundation Trust. The outcome of this funding bid will be communicated in November 2012</p>	<p>4 - Not achieved (Press made acceptable. Continue monitoring.)</p>	
---	---	--	--

<p>Recommendation 17 That the Director of Public Health in Leeds works closely with Care and Repair to begin building up a portfolio of case study evidence to illustrate to commissioners that where vulnerable householders have been in receipt of preventative measures aimed at tackling the hazard of excess cold, this has led to a positive impact in terms of improving their overall health and wellbeing</p>	<p>Formal Response (provided by the Director of Public Health in July 2012):</p> <p>The Director of Public Health agrees to work closely with Care and Repair to begin to build a portfolio of case study evidence to illustrate the impact of preventative measures aimed at tackling the hazard of excess cold. Four good case studies are already available, drawn from the Warm Homes Healthy People project funded by the Department of Health.</p> <p>Current position:</p> <p>As previously reported, four good case studies have been developed, drawn from the Warm Homes Healthy people programme of work. Work continues to progress to build on this portfolio of case studies.</p>	<p>4 - Not achieved (Progress made acceptable. Continue monitoring.)</p>	
<p>Recommendation 18. That the Director of Public Health in Leeds works with the Health and Wellbeing Board and Clinical Commissioning Groups to begin developing and exploring opportunities to lever in financial support for a broader programme of preventative measures aimed at tackling the hazard of excess cold across the city.</p>	<p>Formal Response (provided by the Director of Public Health in July 2012):</p> <p>The Director of Public Health in Leeds agrees to work closely with the Health and Wellbeing Board and Clinical Commissioning Groups to begin to develop and explore opportunities to lever in financial support. This work will form part of the winter planning process to prevent the major avoidable effects of winter on peoples' health.</p> <p>Current position:</p> <p>The Health Improvement Board held a discussion on fuel poverty and explored potential opportunities to lever in financial support for a broader programme of work.</p> <p>It was agreed at the last meeting to submit a joint proposal to the Department of Health Warm Homes Healthy People supported by CCGs, LCC and NHS Leeds. Other opportunities will be explored as they arise.</p>	<p>4 - Not achieved (Progress made acceptable. Continue monitoring.)</p>	

Recommendation 19.
That the Director of Environment and Neighbourhoods leads on developing a strategy with key partners, including the CAB and Advice Leeds, for undertaking benefit checks on an annual basis accompanied with a service offer for conducting fuel tariff checks.

Formal Response (provided by the Director of Environment and Neighbourhoods in July 2012):

Over the years, Environment and Neighbourhoods has cooperated with organisations such as Welfare Rights and CAB through the Affordable Warmth Partnership and various projects to provide vulnerable residents with both income maximisation and fuel poverty advice. The Director of Environment and Neighbourhoods agrees to work with Welfare Rights, CAB and Advice Leeds to develop a strategy for undertaking annual benefits checks and offering fuel tariff checks.

Current position:

The Fuelsavers Team has developed a pilot project with the CAB network to offer joint fuel tariff, debt and income maximisation advice over the winter period. We have requested funding for this project as part of our Warm Homes Healthy People bid from the Department of Health, and we expect to find out whether we have been successful towards the end of October.

4 -
 Not achieved
 (Progress made acceptable.
 Continue monitoring.)

Recommendation 20.
That the Director of Environment and Neighbourhoods leads on undertaking a cost-benefit and risk analysis for the Council to bulk purchase domestic heating fuel for householders. The findings of this analysis should be reported back to the Executive Board and Scrutiny for consideration within 3 months of the South Holland documents becoming available.

Formal Response (provided by the Director of Environment and Neighbourhoods in July 2012):

Environment and Neighbourhoods has recently been in contact with a number of bulk fuel purchase schemes, including South Holland, in order to undertake a comparative analysis of the various proposals. The Director of Environment and Neighbourhoods agrees to develop proposals for a bulk fuel purchase scheme that also delivers energy efficiency improvements to participating households. This will be presented to the Executive Board and Scrutiny Committee within three months of the South Holland documents becoming available or earlier.

	<p>Current position:</p> <p>South Holland have not yet published their documents. We are in the process of evaluating the best approach to take with the scheme. We are gathering feedback from existing pilot projects, such as those in South Lakeland, and Cornwall and will be reporting on the best approach to take to the scrutiny committee, as well as developing a business case in the near future.</p> <p>A funding opportunity has recently been announced by DECC to help coordinate and conduct a bulk fuel purchasing initiative. We are currently developing a proposal ahead of the 30th November deadline and will take a formal proposal to Executive Board for approval in December 2012.</p>	<p>4 - Not achieved (Progress made acceptable. Continue monitoring.)</p>	
--	--	--	--

Fuel Poverty Scrutiny Inquiry Recommendation 10 (ii)

(ii) That the Director of Public Health, Director of Adult Social Services and the Clinical Commissioning Group accountable officers provide an update report to Scrutiny on the implementation of this pathway by July 2012.

Introduction

The Director of Public Health, Director of Adult Social Services and the Clinical Commissioning Group accountable officers have provided the following as an update report to Scrutiny on progress against this recommendation.

The Executive Board and Health and Wellbeing Board in June 2012 agreed that in developing a simple systematic referral pathway across Leeds, a twin track approach would be adopted. The twin track approach would consist of:

- a universal multi-agency referral system to be used across the city by frontline staff linked to other key initiatives, or used in targeted neighbourhoods to support customers to access a wide range of preventative services including affordable warmth, and
- a specialised referral pathway specifically for the referral of clients with an existing health condition used by the health and social care integrated teams.

Schemes considered in developing the twin track approach: MARS, Hotspots, Energy Champion scheme.

In developing the systematic twin track approach, officers from NHS Leeds, Public Health, Environments and Policy team and Clinical Commissioning Groups considered three referral pathways. Adult Social Care were in the process of handing over the MARS programme to the Customer Access and Performance Directorate who have been kept informed of progress.

The three referral pathways considered in the development of the twin track systematic referral system include one specialised referral pathway for clients with an existing health condition, and two universal multiagency referral schemes.

Firstly the Energy Champions scheme, this is a specialised referral scheme across Health and Social Care. Energy champions have been identified and trained across Health and Social care services to identify and refer vulnerable people whose health conditions are exacerbated by living in cold damp conditions. The systematic referral system is a fast track route straight into the Warm Homes service hosted by Care and Repair. This service is currently funded by LCC, Scottish Power, Department of Health Warm Homes Healthy People fund and NHS Airedale, Bradford and Leeds. The Warm Homes Service aims to help improve levels of warmth, comfort and quality of life for vulnerable people who have cold and damp related illnesses, and live in homes that don't have adequate heating or insulation.

Secondly the West Yorkshire Hotspots scheme lead by the Environments and Policy team this is a multi agency referral scheme focusing on energy efficiency and fire safety.

Thirdly, MARS, a universal multi agency referral scheme lead through Leeds City Council Customer and Access Directorate. Leeds City Council are exploring how MARS can be mainstreamed across the City and are in the process of identifying a nominated lead and resources. A number of localised MARS programmes are in the process of being piloted in identified neighbourhoods and evaluations from these pilots will inform any future roll out.

Recommended twin track approach (By Public Health and Environments and Policy team and Clinical Commissioning Groups):

1. The Universal West Yorkshire Hotspots Scheme (working with MARS where there are pilots):

The West Yorkshire Hotspots team is a simple way for professionals and volunteers to refer vulnerable households to energy advice and assistance. The scheme involves a front line worker/volunteer filling out a card with the households basic contact details, three tick boxes to indicate whether the householder requires:

- Energy advice
- A fire safety check
- Benefits information

And space to write any other information that might be relevant to assisting the household.

The householder is then contacted by Yorkshire Energy Services who are experienced at providing energy advice and who currently manage the Cities Wrap Up Leeds free insulation scheme, who will contact the householder, talk through their energy needs and refer them to any appropriate grant assistance and provide benefits information/refer for a fire safety check where appropriate.

With the exception of teams in NHS Leeds and Adult Social Care (who we encourage to join the energy champions scheme) Hotspots is available to any public facing organisation including West Yorkshire Fire Service, Council service providers and voluntary sector organisations, who join by undertaking a free staff training session on fuel poverty issues and grant assistance lasting roughly an hour.

51 Teams/organisations have been trained since the scheme was re-launched in 2010 generating 127 referrals for advice between April – August 2012. (359 referrals were generated during 2011/12). We are currently publicising the scheme through Voluntary Action Leeds in order to generate further interest in time for the winter period.

We continue to support the MARS process which is currently being launched in specific areas of the City; however, referrals will be channelled through the Hotspots referral route with householders being assisted by Yorkshire Energy Services.

2. Department of Health Energy Champion Scheme working with the Warm Homes Service

The Department of Health Energy Champions programme has been established across Health and Social Care in Leeds with agreement to embed in the Health and Social Care integrated teams.

This is a fast track systematic referral system within Health and Social Care led by identified energy champions across the services. Frontline workers identify and assess vulnerable people whose health conditions may be exacerbated by cold damp conditions and refer directly through this fast track system to the Warm Homes Service.

The Warm Homes Service works directly with the person and their carers to establish appropriate measures to be installed and supports the individual to fund the measures through a combination of Warm Homes Service funding, charitable contributions as appropriate and personal contribution as agreed with the client.

35 energy champions have been trained across Health since the programme began with 25 champions receiving refresher training in 2012. A target of 55 referrals has been agreed for 2012/13 which the programme is on line to meet.

Summary

In summary the systematic twin track approach proposed to provide an appropriate level of support to clients, with differing level of needs to address fuel poverty is:

West Yorkshire Hotspots referral scheme: A universal system for frontline workers to use across Leeds, linking with MARS where appropriate

Department of Health Energy Champion Scheme: A fast track systematic referral scheme for Health and Social Care staff to identify and refer vulnerable people into the Warm Homes Service.

Dawn Bailey Public Health NHS Leeds

Lucy Jackson Public Health Lead for IHSC on behalf of the 3 CCGs

Robert Curtis Environments and Neighbourhoods LCC